

# Student Bulletin

November

## Calendar Events

MONDAY	TUESDAY	WEDNESDAY	THURSDAY	FRIDAY
Week 2 First day of Autumn term 2				Year 11 NCS Assembly

## PE Fixtures

DATE	SPORT	RETURN	LOCATION
Monday	Year 10&11 Football training at Goalzone Mr Thomas (MINIBUS)	16:10	Goalzone
Wednesday	LCT Netball Training Y7-10	16:30	HLC
Thursday	U14 Girls District Cup Football v TPS	16:30	Charlton School
Friday	U13 Girls 6-a-side football tournament BYC (minibus)	17:20	Shrewsbury Town

## Announcements

During break times you only need to join the queue by the main hall to the cafeteria if you are purchasing food. Otherwise you may go straight down via the central staircase.

## Week Commencing: 01/11/21

## PSHE & SMSC

PSHE Theme: Responsibility

### November 1<sup>st</sup> ALL SAINTS' DAY • Western Christian

Commemorates all known and unknown Christian saints. Eastern Christianity observes it on the first Sunday after Pentecost.

### November 2<sup>nd</sup> ALL SOULS' DAY • Christian

Commemoration of all faithful Christians who are now dead. In Mexican tradition it is celebrated as *Dia de los Muertos* between October 31 and November 2, and is an occasion to remember dead ancestors and celebrate the continuity of life.

### November 4<sup>th</sup> BANDI-CHHOR DIWAS • Sikh

A commemorative occasion having no fixed date which occurs in October or November and celebrates the release of the Sixth Guru Har Gobind Sahib from imprisonment and coincides with Diwali, the Hindu festival of lights.

### November 4<sup>th</sup> DIWALI • Hindu

Also called *Deepavali*, "Festival of Lights", it celebrates the victory of good over evil, light over darkness, and knowledge over ignorance.

## Reminders

Please remember **ONLY**  
**NAVY BLUE PE Hoodies**  
**Allowed in school**

### Assembly Rota

1st November	Monday	Year 7
2nd	Tuesday	Year 8
3rd	Wednesday	Year 9
4th	Thursday	Year 10
5th	Friday	Year 11

Welcome  
BACK TO  
SCHOOL



A circular arrangement of colorful pencils pointing towards the center, with a bright pink and purple gradient background. The pencils are in various colors including pink, orange, yellow, green, blue, and purple. The text "Timetable Week 2" is written in a white, cursive font across the center of the image.

# Timetable Week 2

# School Day Timings

	Activity	Action Plans
08:40	Student Arrival on Site/Move to tutor	
8:45 – 8:55	Tutor	Tutor time for notices, uniform/equipment checks and registration only
8:55 – 9:55	Lesson 1	
9:55 – 11:10	Lesson 2 with a rolling break	9:55 – 10:10 – Ground floor and PE
		10:20 – 10:35 – Hums/ICT/MFL classrooms
		10:55 – 11:10 – Second Floor and Maths
11:10 – 12:10	Lesson 3	
12:10 – 13:40	Lesson 4 with rolling lunch	12:10 – 12:40 – Ground Floor and PE
		12:40 – 13:10 – Hums/ICT/MFL classrooms
		13:10 – 13:40 – Second floor and Maths
13:40 – 14:00	Reading Lesson 5	Reading (Year 7 to 10) Year 11 Literacy/Numeracy intervention
14:00 – 15:00	Lesson 6	

# Remember your correct Uniform & Equipment

## ■ Essential equipment

- 2xpens
- 1xPencil
- Red pen for Close The Gap work
- Ruler
- Scientific Calculator



This is the calculator that we sell at school for £9.

Shirts, Ties & Blazers



Uniform Guide 2019/20

Hoodies or Zip up Jackets should not be worn instead of School blazers.

Skirt Length: Knee length pleated skirts only

Trousers: Boys & Girls

No skinny or tight trousers, Straight leg only

Proper black shoes. No Trainers, either leather or canvas

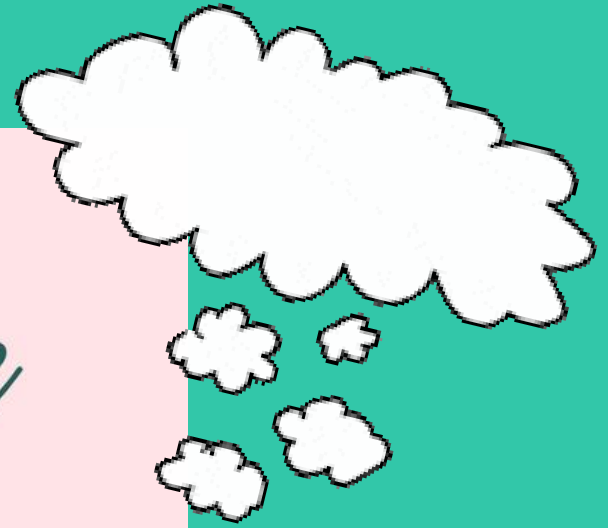
Footwear: Boys & Girls



CHARLTON EXPECTS

Let today be  
the start of  
something

NEW



NEW WEEK.  
NEW HAPPY  
TIMES.  
NEW GOALS.

# Our British Values

Democracy



Rule of Law



Mutual Respect



Individual Liberty



Tolerance



Democracy

Democracy can be seen as a state of society characterised by equality of rights and privileges. It can also refer to our nation's electoral systems.

Rule of Law

It is expected that while different people may hold different views about what is 'right' and 'wrong', all people living in England are subject to its law.

Mutual Respect

The proper regard for an individual's dignity, which is reciprocated.

Individual Liberty

Individual liberty suggests the free exercise of rights generally seen as outside Government control.

Tolerance

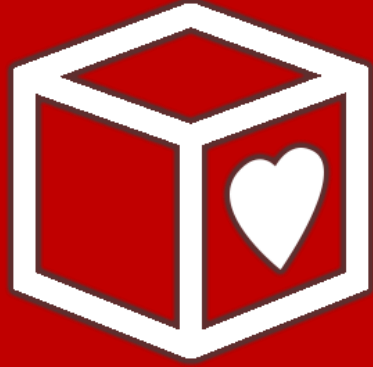
A fair, objective, and permissive attitude to those whose faith, religion and beliefs may differ from one's own.

RESPECT

RESILIENCE

RESPONSIBILITY





## The Red Box Project

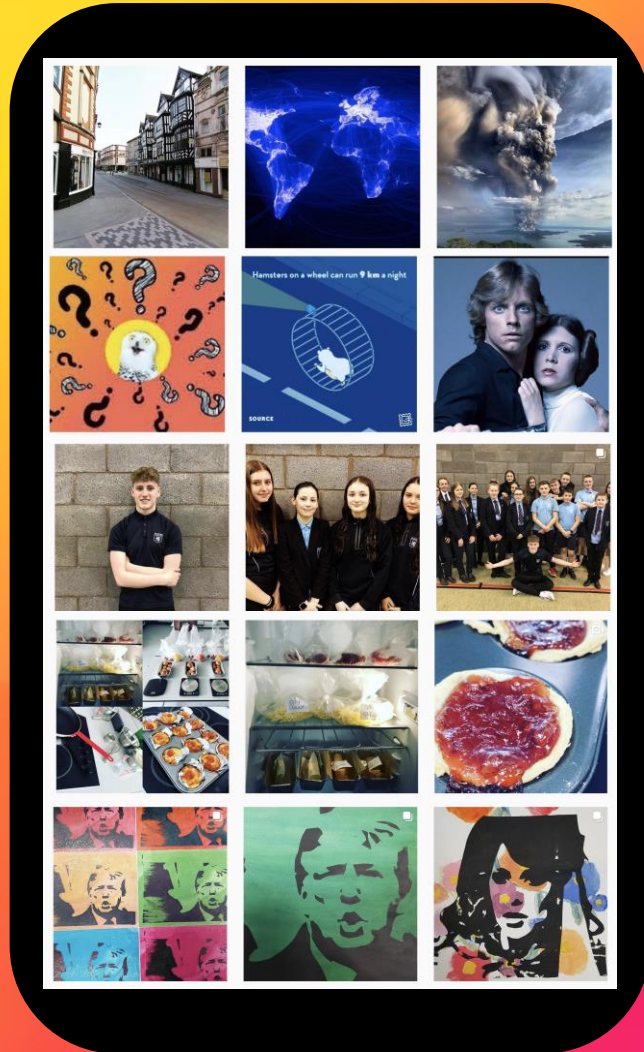
We participate in The Red Box Project as we believe no young person should miss out on their education because they have their period. and also know that emergencies can happen whilst in school.

Should you ever need sanitary products or spare underwear, please go to reception and ask for the Red Box.



FOLLOW OUR SOCIAL MEDIA ACCOUNTS TO SEE THE WONDERFUL WORK  
CREATED BY THE TALENTED STUDENTS HERE AT CHARLTON!

Follow



@CHARLTONSCHOOLGEO

@CHARLTONSCHOOLEXPRESSIVEARTS

@CHARLTONSCHOOLMEDIA

@CHARLTONSCHOOLPE

@CHARLTONSCHOOLTECH

@CHARLTONSCHOOLART

PLUS A NEW ENGLISH REVISION TIKTOK ACCOUNT

@MISSKNIGHT\_EN8

# SHREWSBURY COLLEGES GROUP : *Open Events*

REGISTER FOR THE FOLLOWING EVENTS THROUGH  
THE SHREWSBURY COLLEGE WEBSITE

- VIRTUAL – WEDNESDAY 29<sup>TH</sup> SEPTEMBER AT 6PM
- EXTERNAL EVENT AT SHREWSBURY FOOTBALL CLUB – 6<sup>TH</sup> OCTOBER AT 4PM
- OPEN EVENINGS –
  - VIRTUAL WEDNESDAY 13<sup>TH</sup> OCTOBER
  - A LEVELS – TUESDAY 19<sup>TH</sup> OCTOBER – ENGLISH & WELSH BRIDGE – 5 TO 8PM
  - VOCATIONAL – 4<sup>TH</sup> NOVEMBER – LONDON ROAD – 5 TO 8PM
  - A LEVELS – 10<sup>TH</sup> FEBRUARY 5 TO 8PM – ENGLISH & WELSH BRIDGE

# SHREWSBURY COLLEGES GROUP : Taster Sessions

## REGISTER FOR THE FOLLOWING EVENTS THROUGH THE SHREWSBURY COLLEGE WEBSITE

- A LEVELS – 20<sup>TH</sup> NOVEMBER – ENGLISH & WELSH BRIDGE – 9 TO 1PM
- VOCATIONAL – W/C 22<sup>ND</sup> NOVEMBER – LONDON ROAD – TWILIGHT SESSIONS
- THERE IS A VIRTUAL CAMPUS TOUR ON THEIR WEBSITE
- YOUTUBE – THEIR CHANNEL HAS VIDEOS FOR ALL THEIR FULL-TIME COURSES
- IF CONSIDERING A LEVELS ( GCSE ACHIEVING GRADES 7/8) SELECT 4 A LEVEL OPTIONS
- YOU CAN MIX AND MATCH THE TASTERS

**CONGRATULATIONS!**

# SCIENCE

**STUDENT OF THE WEEK**

Year 7	Kirsty A
Year 8	Pansilu W
Year 9	Harriet H
Year 10	Bisma R
Year 11	Sara D





# **K54 SPACE ART COMPETITION**

Your creation, it's up to you - it could be a photo, collage, model, any medium of choice BUT you must include a description of the Science being observed.

---

Hand in to the Science department.

Closing date: 30th November.





# **K53 STEM**

# **COMPETITION**

## **(Y7-9)**

- Can you design a Moon Lander?
- Working individually or in groups of up to 3, design and make a lander module that can safely land an egg from 5 feet in the air.
- See Doodle for details.
- Hand in to the Science Department.
- Closing date: 30th November



**Please remember to return your  
books to the school library**

Please note, the Library is open for exchanging books only  
(no computer use) at lunch time and closes at 13:30.

The library is now open after school until 3:45 for doing  
homework, reading and exchanging books.

# Book Donations wanted



If you have any spare books that are suitable for ages 11-16, please bring them into school. The Library would be extremely grateful for these donations and in return you will receive a house point.





# AFTER SCHOOL ACTIVITIES SECTION



# Charlton School Drama Academy


Year 7, 8 and 9

*Wednesday 3-4pm in  
DR1*

*With Miss O'Hanlon*




# Charlton Dance Presents KS3 Dance Club



A new Charlton Dance Club for KS3 students interested in Street Dance. If you have an interest in Dance, come along and give it a try!

This will be hosted by Miss Payne, in the Sports Hall @ 3-4pm on a Monday after school.



# Homework

**Club**

**Homework Club for Y7, Y8 and Y9**  
**Tuesdays in NU4.**  
**This will be from 3 to 4pm.**



# MINECRAFT CLUB

Minecraft club Wednesday 3-4pm

Year 7s only and Limited Places



To attend, you must collect a pass to book your place every Monday from ICT2 which will be handed back each week.



	MAIN HALL / FITNESS SUITE	SPORTS HALL	FIELD	TENNIS COURTS
MONDAY	<u>After School</u>	<u>After School</u> <b>Basketball</b> Year 8 & 9 Mr Simms	<u>After School</u> <b>Football</b> Year 7 Boys Mr Lawton <b>Football</b> Year 10 & 11 Boys <b>@GOALZONE</b> Mr Thomas <b>Girls Football</b> All Years Ms Byrne	<u>After school</u> <b>Netball</b> Years 9, 10, 11 Mrs Perrott <b>Handball</b> Year 9,10 & 11 Boys and Girls Mr Jones
TUESDAY <u>After School</u> MAIN HALL <b>Fitness</b> <b>Body Pump Yoga</b> All year groups Boys & Girls Mrs Mckevitt	Staff Meetings <u>8-8.35am</u> <b>Fitness</b> Body pump and body combat Fitness Year 7&8 Boys and Girls Miss Johnson	Staff Meetings	Staff Meetings	Staff Meetings
WEDNESDAY	<u>After school</u> 3-4.15pm <b>Staff Fitness</b>	<u>After School</u> <b>Basketball</b> All Years 8,9,10,11 Girls Mr Simms	<u>After School</u> <b>Rugby LCT</b> Year 9 <b>Football</b> Year 8 & 9 Boys Mr Jones	<u>After School</u> <b>Dodgeball in Main Hall</b> Year 7 & 8 Mr Thomas
THURSDAY	<u>After School</u> <b>Fitness – Body combat and Boxercise</b> Years 10 & 11 Joe Lockley (Limited number of spaces - see Mr Thomas to sign up)	<u>After School</u> <b>Basketball</b> Year 10 & 11 Mr Simms	<u>After School</u> <b>Rugby</b> Year 7 & 8 Boys & Girls Mr Lawton	<u>After School</u> <b>Netball</b> Year 7 & 8 Miss Johnson Ms Byrne
FRIDAY	<u>After School</u> <b>Fitness / Weight Training</b> Year 9,10 & 11 Boys & Girls Mr Thomas	<u>After School</u> <b>Cricket</b> Year 7 & 8 Boys and Girls Mr Jones	<u>After School</u> <b>Rugby</b> Year 9 & 10 Boys & Girls Mr Lawton	



HALLO YEARS 8-10

# GERMAN CLUB



After School club every Week 2 Wednesday after school.  
Please see Miss Jahn for more details



Charlton's got talent  
contestants!

Please meet in Music on  
Monday 1<sup>st</sup> November  
during form time to  
discuss the next stages



# EXPRESSIVE ARTS CLUBS

**Clubs will start again this week!  
Look out for the timetable for  
more information.**

**Art club will be paused on  
Wednesdays during  
preparations for Matilda.**



# Tuesdays : Card Games



Pre-made decks for Yu-Gi-Oh!  
available to borrow



Uno decks  
available  
at school



Strategy Games



Playing card decks available at  
school

# Thursdays: Chess Club



School has chess sets for use, but  
there are limited boards available



**The club will be in AR2  
For more details speak to  
Mr Millar**

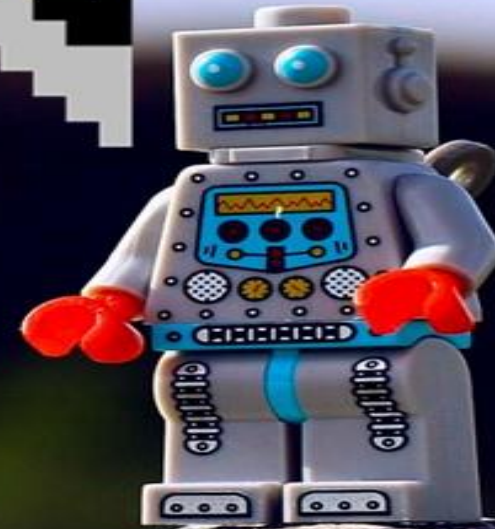
# LEGO ROBOTICS CLUB

WHEN: MONDAY WEEK 1

TIME: 3-4PM

WHERE: TC2 TECHNOLOGY

WHO CAN JOIN: YEAR 7'S



# Team Blue needs you!

Help us support Telford food banks by bringing in food donations!  
Bring in items to LSR to receive a house point as a thankyou for your kindness.





Our SEND department needs your help! If you have any Lego, which you no longer use, please can you donate it to us for our LEGO THERAPY INTERVENTION, which we want to use to support our students. Please take to the SEND Department. Your support would be greatly appreciated.



# NOVEMBER ACTIVITIES

HOUSE	POINTS
Hawthorn	6003
Birch	5674
Willow	5533
Sycamore	4881

House	Weekly Points	Position last week
Willow	828	2 <sup>nd</sup>
Birch	757	3 <sup>rd</sup>
Hawthorn	686	1 <sup>st</sup>
Sycamore	652	4 <sup>th</sup>

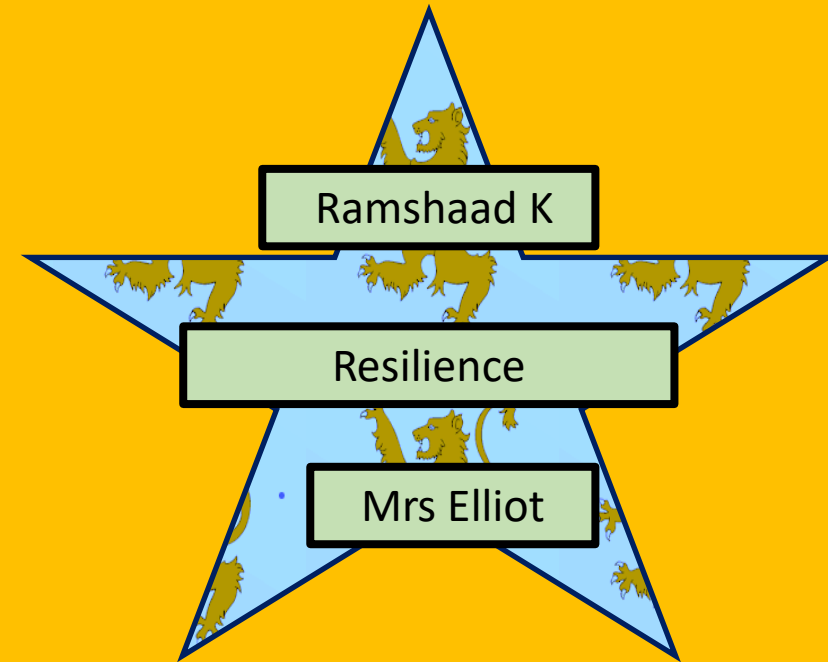
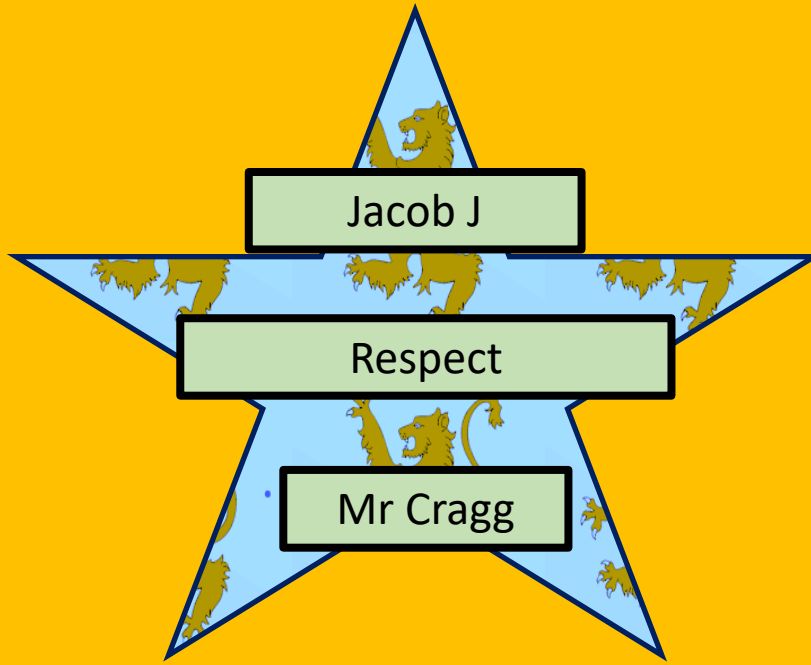
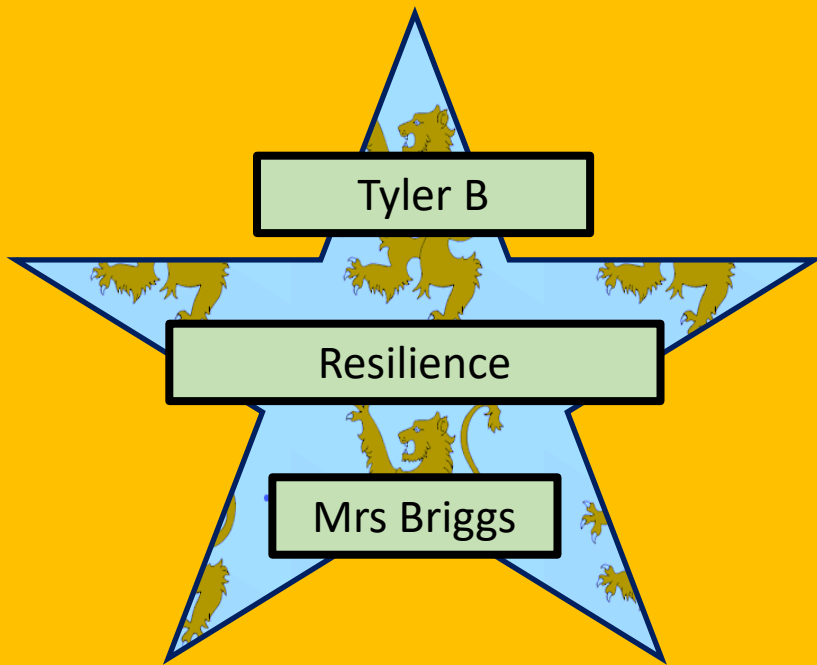


**TOP HOUSE:  
HAWTHORN!**

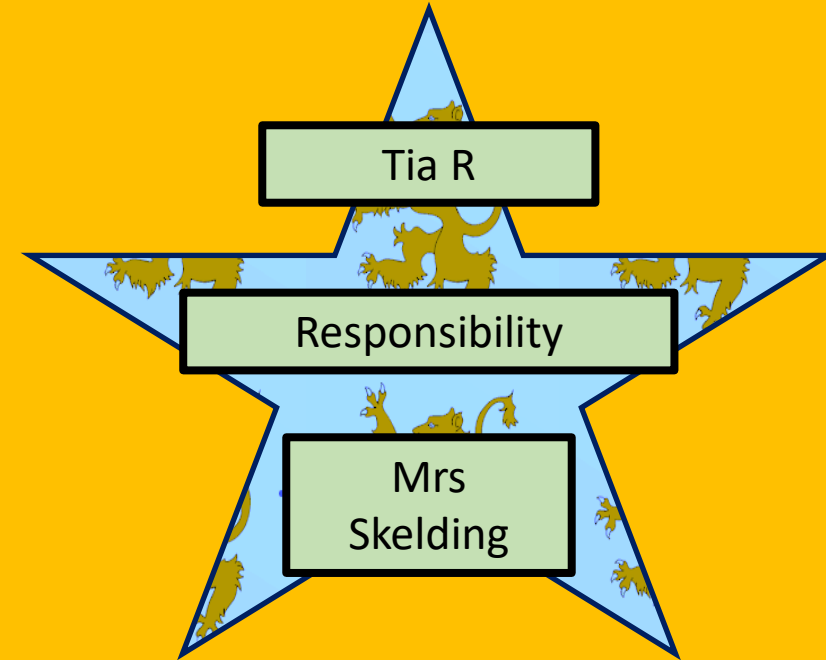
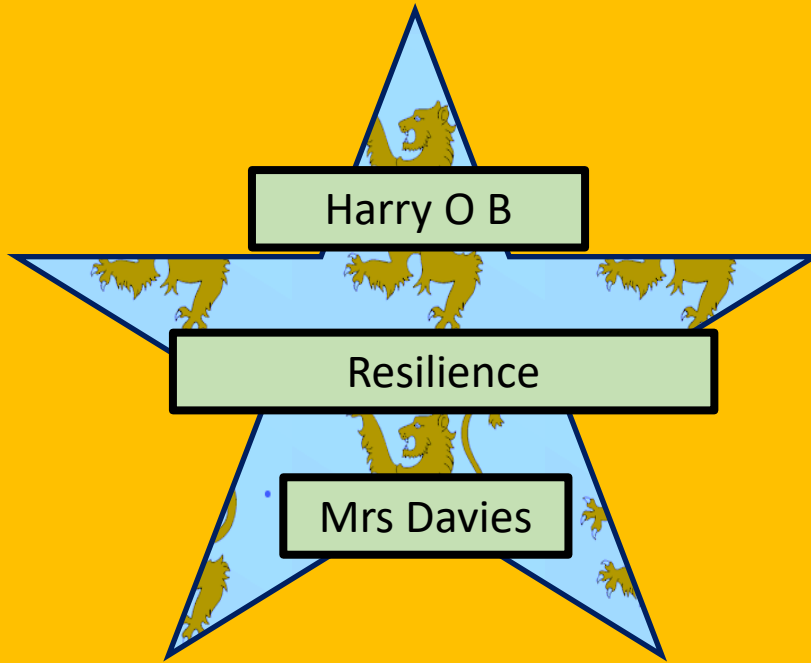
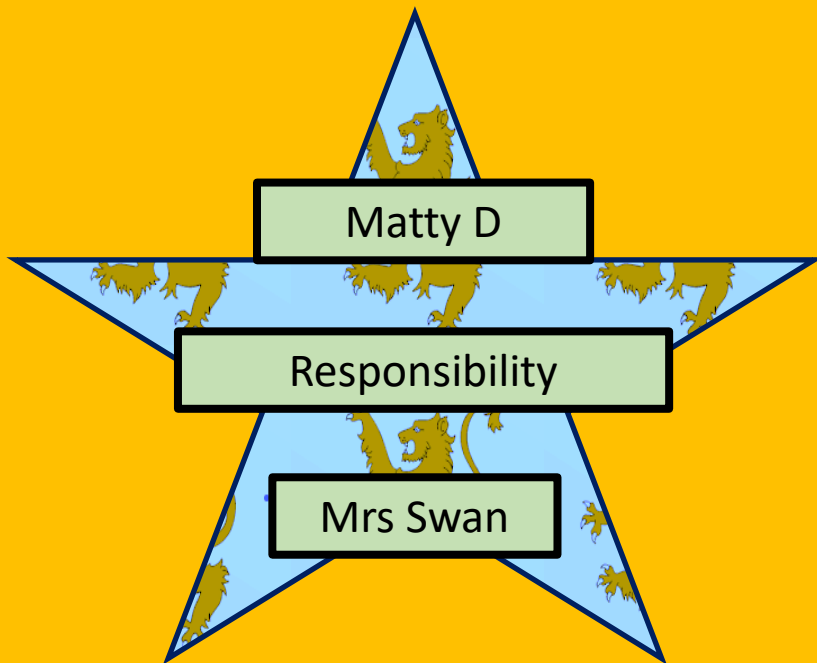


# CUMULATIVE TUTOR POINTS SO FAR THIS TERM.

7.1	506	8.1	427	9.1	593	10.1	361	11.1	495
7.2	638	8.2	509	9.2	564	10.2	447	11.2	345
<b>7.3</b>	848	8.3	494	9.3	588	10.3	510	11.3	414
7.4	690	8.4	506	9.4	567	10.4	473	11.4	349
7.5	423	8.5	482	9.5	522	10.5	424	11.5	624
7.6	786	<b>8.6</b>	795	9.6	537	<b>10.6</b>	730	11.6	394
7.7	772	8.7	567	9.7	544	10.7	607	<b>11.7</b>	683
7.8	785	8.8	534	<b>9.8</b>	567	10.8	441	11.8	554

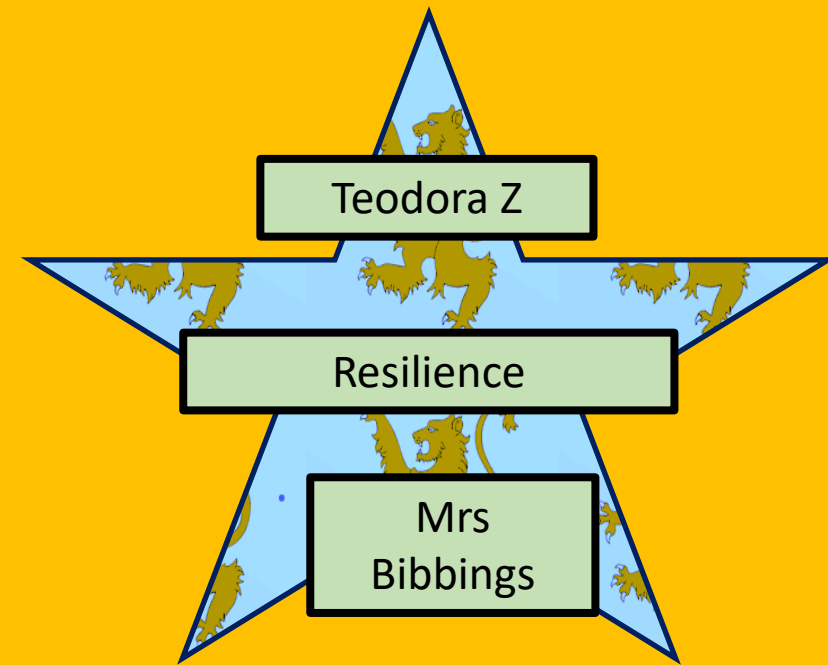
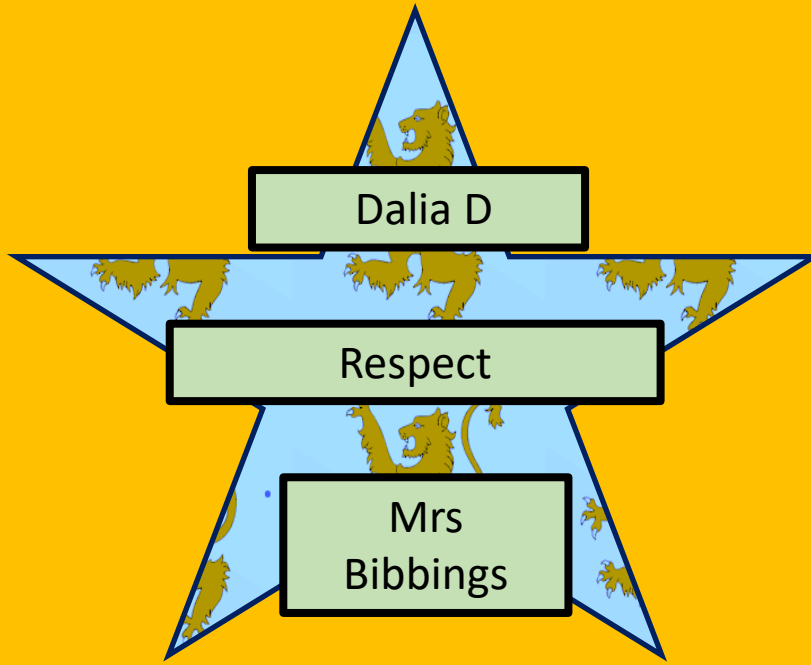


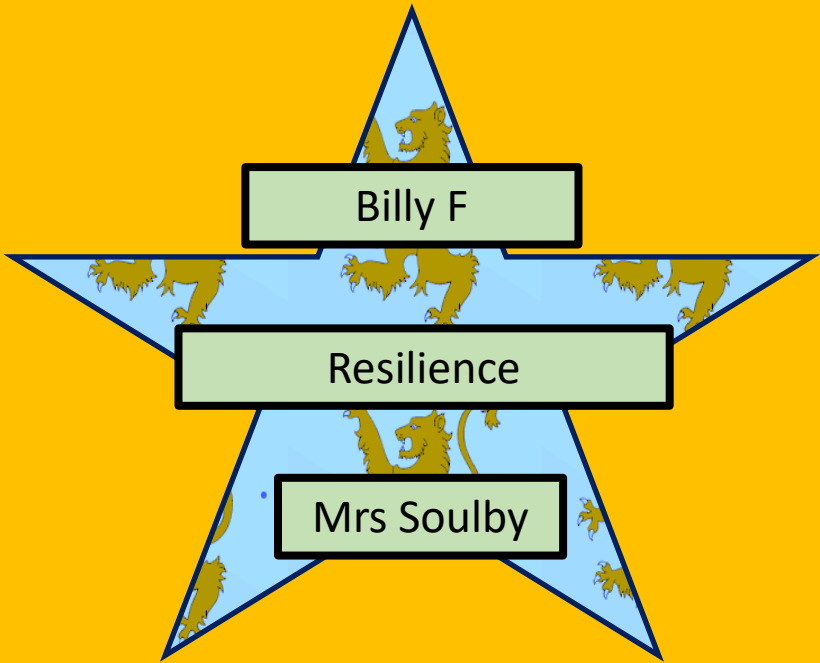




*Charlton School  
Inclusion Team*



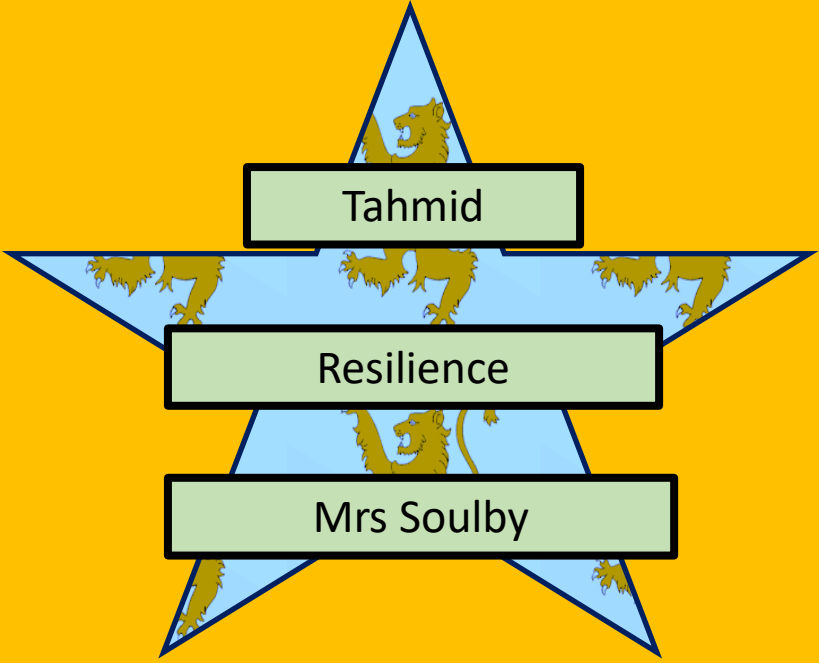




Billy F

Resilience

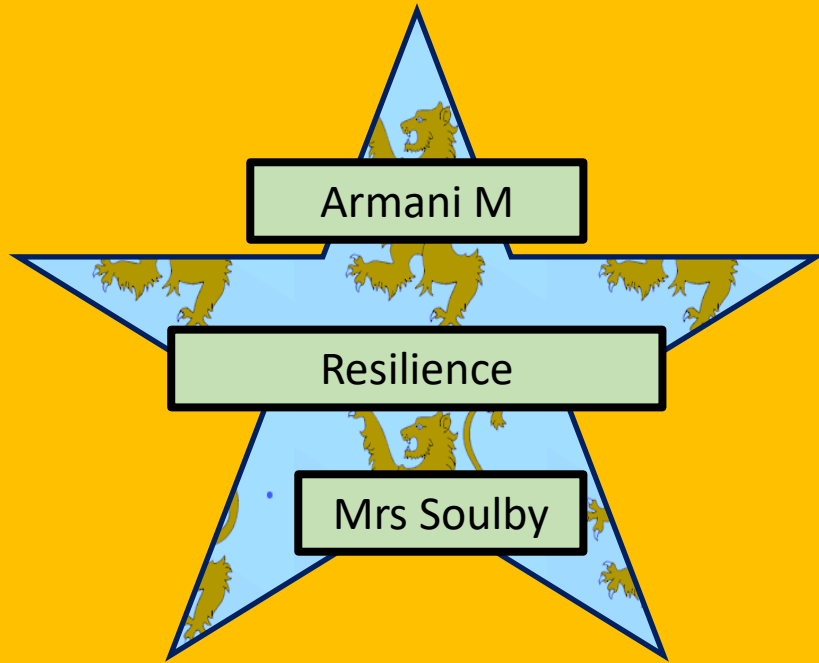
Mrs Soulby



Tahmid

Resilience

Mrs Soulby



Armani M

Resilience

Mrs Soulby



Brooklyn P

Resilience

Mr Foscett

*Charlton School  
Inclusion Team*



**ShoutOut**



Brandon M

Resilience

Mrs Skelding



Responsibility



Charlton School  
Inclusion Team

BE  
CREATIVE



RESILIENCE

# Diwali

## Festival Of Light

House Activity Theme LIGHT.

How creative can YOUR TUTOR GROUP be?  
Create a Tutor Group poster linked to theme of LIGHT.  
These will be displayed in HOUSES and EVERYONE in the  
winning House will receive points and a shoutout for the  
House.