

# Student Bulletin

HELLO  
November

## Calendar Events

MONDAY	TUESDAY	WEDNESDAY	THURSDAY	FRIDAY
Week 1	<u>Personal Development Lesson Period 2</u>		<u>Remembrance Day assembly</u>	

Week Commencing: 08/11/21

## PSHE & SMSC

PSHE Theme: Celebrating Success

## PE Fixtures

DATE	SPORT	RETURN	LOCATION
Monday 8 <sup>th</sup>	Year 10&11 Football training	16:10	Goalzone
Thursday 11 <sup>th</sup>	Winter Netball League	17:00	Ercall Wood
Thursday 11 <sup>th</sup>	Yr7 Girls District Cup Football	16:30	Charlton
Friday 12 <sup>th</sup>	Yr3/4 Cricket Leaders	15:00	Telford Tennis Centre

**8<sup>th</sup> – 14<sup>th</sup> Global Entrepreneurship Week**- During one week each November, thousands of events and competitions in 180 countries inspire millions to engage in entrepreneurial activity while connecting them to potential collaborators, mentors, and even investors. Powered by the Kauffman Foundation, the initiative is supported by dozens of world leaders and a network of more than 15,000 partner organizations.

### 11<sup>th</sup> November – Remembrance Day

Every year in the UK on 11<sup>th</sup> November we honour members of the armed forces who lost their lives in battle. In the weeks leading up to 11<sup>th</sup> November, The Royal British Legion charity sell paper poppy flowers to raise funds for veterans and their families (the poppy is a symbol of Remembrance Day). It is customary to observe a two-minute silence at 11am.

## Announcements

During break times you only need to join the queue by the main hall to the cafeteria if you are purchasing food. Otherwise you may go straight down via the central staircase.

## Reminders

Please remember **ONLY NAVY BLUE PE Hoodies** Allowed in school

### Assembly Rota

8th November	Monday		
9th	Tuesday		NCS
10th	Wednesday		
11th	Thursday	Full School - Remembrance (SMSC)	
12th	Friday		

A circular arrangement of colorful pencils pointing towards the center, with a bright pink and purple gradient background. The pencils are in various colors including pink, orange, yellow, green, blue, and purple. The text "Timetable Week 1" is written in a white, cursive font across the center of the image.

# Timetable Week 1

# School Day Timings

	Activity	Action Plans
08:40	Student Arrival on Site/Move to tutor	
8:45 – 8:55	Tutor	Tutor time for notices, uniform/equipment checks and registration only
8:55 – 9:55	Lesson 1	
9:55 – 11:10	Lesson 2 with a rolling break	9:55 – 10:10 – Ground floor and PE
		10:20 – 10:35 – Hums/ICT/MFL classrooms
		10:55 – 11:10 – Second Floor and Maths
11:10 – 12:10	Lesson 3	
12:10 – 13:40	Lesson 4 with rolling lunch	12:10 – 12:40 – Ground Floor and PE
		12:40 – 13:10 – Hums/ICT/MFL classrooms
		13:10 – 13:40 – Second floor and Maths
13:40 – 14:00	Reading Lesson 5	Reading (Year 7 to 10) Year 11 Literacy/Numeracy intervention
14:00 – 15:00	Lesson 6	



# Remember your correct Uniform & Equipment

## ■ Essential equipment

- 2xpens
- 1xPencil
- Red pen for Close The Gap work
- Ruler
- Scientific Calculator



This is the calculator that we sell at school for £9.

### Shirts, Ties & Blazers



Uniform Guide 2019/20

Hoodies or Zip up Jackets should not be worn instead of School blazers.

### Trousers: Boys & Girls



Skirt Length: Knee length pleated skirts only

No skinny or tight trousers, Straight leg only

### Footwear: Boys & Girls



Proper black shoes. No Trainers, either leather or canvas







AT THE GOING DOWN OF THE SUN  
AND IN THE MORNING, WE SHALL  
REMEMBER THEM





# Our British Values

Democracy



Rule of Law



Mutual Respect



Individual Liberty



Tolerance



Democracy

Democracy can be seen as a state of society characterised by equality of rights and privileges. It can also refer to our nation's electoral systems.

Rule of Law

It is expected that while different people may hold different views about what is 'right' and 'wrong', all people living in England are subject to its law.

Mutual Respect

The proper regard for an individual's dignity, which is reciprocated.

Individual Liberty

Individual liberty suggests the free exercise of rights generally seen as outside Government control.

Tolerance

A fair, objective, and permissive attitude to those whose faith, religion and beliefs may differ from one's own.

RESPECT

RESILIENCE

RESPONSIBILITY







**8th-14th November**

**Should we do more to  
protect elephants?**





# British Values

8<sup>th</sup> – 14<sup>th</sup> November 2021

## Individual Liberty

It is important to remember our actions may have consequences. The actions of poachers have caused an increasing number of elephants being born without tusks.



8<sup>th</sup> November 2021

# UN Rights of a Child

I can set up or join groups, such as the World Wildlife Fund (WWF) or Youth 4 African Wildlife (Y4AW) as long as it doesn't harm others.





# Picture News

**8<sup>th</sup> November 2021**

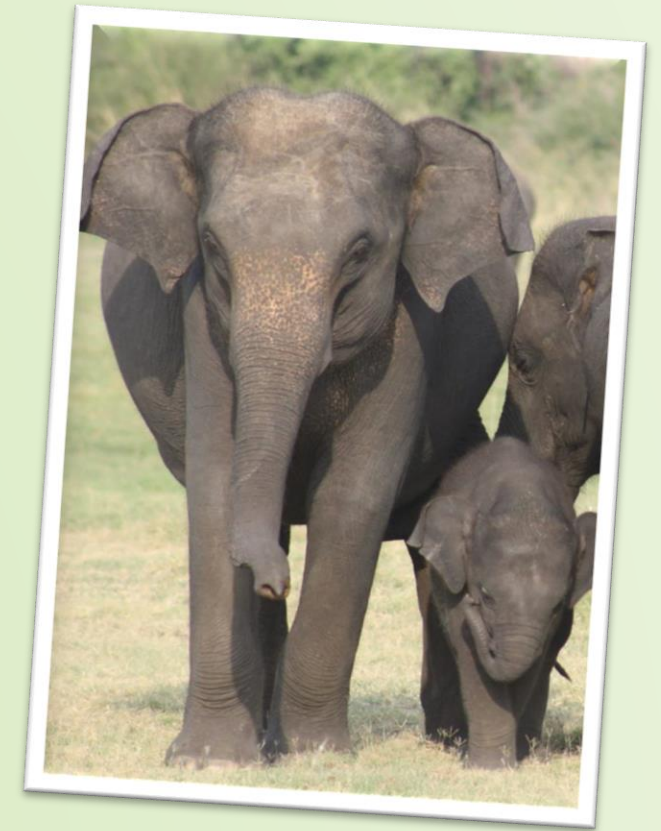
**What's going on this week?**

A new study published in Science magazine found that in Gorongosa National Park, Mozambique, a rare genetic condition, that causes tuskless elephants, has become more common. Ivory poaching has pushed the species to the brink of extinction but the few tuskless elephants left could now increase in numbers.

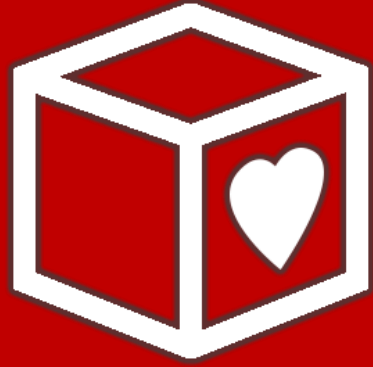
Around 90% of Mozambique's elephant population was slaughtered by fighters on both sides of the civil war there that lasted from 1977 to 1992. Poachers sold the ivory to finance the conflict. Elephants without tusks were left alone by hunters, leading to an increased likelihood they would breed and pass on the tuskless trait to their offspring.

This week's news story: [www.bbc.co.uk/news/world-africa-59008037](http://www.bbc.co.uk/news/world-africa-59008037)

This week's useful video: [www.youtube.com/watch?v=QTEJw7WtRRA](https://www.youtube.com/watch?v=QTEJw7WtRRA)







## The Red Box Project

We participate in The Red Box Project as we believe no young person should miss out on their education because they have their period. and also know that emergencies can happen whilst in school.

Should you ever need sanitary products or spare underwear, please go to reception and ask for the Red Box.

# Breakfast Service

From Monday 13<sup>th</sup>, the canteen will be providing a breakfast service from **8:00 am**.

Only students wishing to buy food from the canteen can access the school at this time and should do so through the main reception.









# SHREWSBURY COLLEGES GROUP : *Open Events*

REGISTER FOR THE FOLLOWING EVENTS THROUGH  
THE SHREWSBURY COLLEGE WEBSITE

- VIRTUAL – WEDNESDAY 29<sup>TH</sup> SEPTEMBER AT 6PM
- EXTERNAL EVENT AT SHREWSBURY FOOTBALL CLUB – 6<sup>TH</sup> OCTOBER AT 4PM
- OPEN EVENINGS –
  - VIRTUAL WEDNESDAY 13<sup>TH</sup> OCTOBER
  - A LEVELS – TUESDAY 19<sup>TH</sup> OCTOBER – ENGLISH & WELSH BRIDGE – 5 TO 8PM
  - VOCATIONAL – 4<sup>TH</sup> NOVEMBER – LONDON ROAD – 5 TO 8PM
  - A LEVELS – 10<sup>TH</sup> FEBRUARY 5 TO 8PM – ENGLISH & WELSH BRIDGE



# SHREWSBURY COLLEGES GROUP : Taster Sessions

## REGISTER FOR THE FOLLOWING EVENTS THROUGH THE SHREWSBURY COLLEGE WEBSITE

- A LEVELS – 20<sup>TH</sup> NOVEMBER – ENGLISH & WELSH BRIDGE – 9 TO 1PM
- VOCATIONAL – W/C 22<sup>ND</sup> NOVEMBER – LONDON ROAD – TWILIGHT SESSIONS
- THERE IS A VIRTUAL CAMPUS TOUR ON THEIR WEBSITE
- YOUTUBE – THEIR CHANNEL HAS VIDEOS FOR ALL THEIR FULL-TIME COURSES
- IF CONSIDERING A LEVELS ( GCSE ACHIEVING GRADES 7/8) SELECT 4 A LEVEL OPTIONS
- YOU CAN MIX AND MATCH THE TASTERS



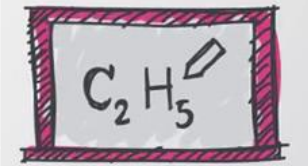


**CONGRATULATIONS!**

# SCIENCE

**STUDENT OF THE WEEK**

Year 7	Seb B
Year 8	Lily B
Year 9	Maja D
Year 10	Molly J
Year 11	Robbie B







# **K54 SPACE ART COMPETITION**

Your creation, it's up to you - it could be a photo, collage, model, any medium of choice BUT you must include a description of the Science being observed.

---

Hand in to the Science department.

Closing date: 30th November.





# **K53 STEM**

# **COMPETITION**

## **(Y7-9)**

- Can you design a Moon Lander?
- Working individually or in groups of up to 3, design and make a lander module that can safely land an egg from 5 feet in the air.
- See Doddle for details.
- Hand in to the Science Department.
- Closing date: 30th November





**Please remember to return your  
books to the school library**

Please note, the Library is open for exchanging books only  
(no computer use) at lunch time and closes at 13:30.

The library is now open after school until 3:45 for doing  
homework, reading and exchanging books.

# Book Donations wanted



If you have any spare books that are suitable for ages 11-16, please bring them into school. The Library would be extremely grateful for these donations and in return you will receive a house point.





# AFTER SCHOOL ACTIVITIES SECTION





# Charlton School Drama Academy

Year 7, 8 and 9


*Wednesday 3-4pm in  
DR1*

*With Miss O'Hanlon*






# Charlton Dance Presents KS3 Dance Club



A new Charlton Dance Club for KS3 students interested in Street Dance. If you have an interest in Dance, come along and give it a try!

This will be hosted by Miss Payne, in the Sports Hall @ 3-4pm on a Monday after school.





# Homework

**Club**

**Homework Club for Y7, Y8 and Y9**  
**Tuesdays in NU4.**  
**This will be from 3 to 4pm.**







	MAIN HALL / FITNESS SUITE	SPORTS HALL	FIELD	TENNIS COURTS
MONDAY	<u>After School</u>	<u>After School</u> <b>Basketball</b> Year 8 & 9 Mr Simms	<u>After School</u> <b>Football</b> Year 7 Boys Mr Lawton <b>Football</b> Year 10 & 11 Boys <b>@GOALZONE</b> Mr Thomas <b>Girls Football</b> All Years Ms Byrne	<u>After school</u> <b>Netball</b> Years 9, 10, 11 Mrs Perrott <b>Handball</b> Year 9,10 & 11 Boys and Girls Mr Jones
TUESDAY <u>After School</u> MAIN HALL <b>Fitness</b> <b>Body Pump Yoga</b> All year groups Boys & Girls Mrs Mckevitt	Staff Meetings <u>8-8.35am</u> <b>Fitness</b> Body pump and body combat Fitness Year 7&8 Boys and Girls Miss Johnson	Staff Meetings	Staff Meetings	Staff Meetings
WEDNESDAY	<u>After school</u> 3-4.15pm <b>Staff Fitness</b>	<u>After School</u> <b>Basketball</b> All Years 8,9,10,11 Girls Mr Simms	<u>After School</u> <b>Rugby LCT</b> Year 9 <b>Football</b> Year 8 & 9 Boys Mr Jones	<u>After School</u> <b>Dodgeball in Main Hall</b> Year 7 & 8 Mr Thomas
THURSDAY	<u>After School</u> <b>Fitness – Body combat and Boxercise</b> Years 10 & 11 Joe Lockley (Limited number of spaces - see Mr Thomas to sign up)	<u>After School</u> <b>Basketball</b> Year 10 & 11 Mr Simms	<u>After School</u> <b>Rugby</b> Year 7 & 8 Boys & Girls Mr Lawton	<u>After School</u> <b>Netball</b> Year 7 & 8 Miss Johnson Ms Byrne
FRIDAY	<u>After School</u> <b>Fitness / Weight Training</b> Year 9,10 & 11 Boys & Girls Mr Thomas	<u>After School</u> <b>Cricket</b> Year 7 & 8 Boys and Girls Mr Jones	<u>After School</u> <b>Rugby</b> Year 9 & 10 Boys & Girls Mr Lawton	



HALLO YEARS 8-10

# GERMAN CLUB



After School club every Week 2 Wednesday after school.  
Please see Miss Jahn for more details



# IMPORTANT INFORMATION ABOUT EXPRESSIVE ARTS REHEARSALS AND CLUBS

*Monday* – Matilda Principal Roles Main hall 3-5pm

*Tuesday* - KS3 Dance Club- Sports Hall 3-4pm

*Wednesday* - KS3 Drama Club and Dance Company- Main Hall/DR1 3-4pm

*Thursday* - STAFF technical run for Charlton's got talent  
NO rehearsals

*Friday*- Performer's technical run for Charlton's got talent- Main Hall  
3-6pm







**If you have ordered an art pack they are now ready for collection from ARI**

**They are still available to be purchased on ParentPay if you would like one**



# Tuesdays : Card Games



PRE-MADE DECKS FOR  
YU-GI-OH! AVAILABLE  
TO BORROW



UNO DECKS  
AVAILABLE  
AT SCHOOL



STRATEGY GAMES



PLAYING CARD  
DECKS AVAILABLE  
AT SCHOOL

# Thursdays: Chess Club



SCHOOL HAS CHESS  
SETS FOR USE, BUT  
THERE ARE LIMITED  
BOARDS AVAILABLE

The club will be in AR2  
For more details speak to  
Mr Millar

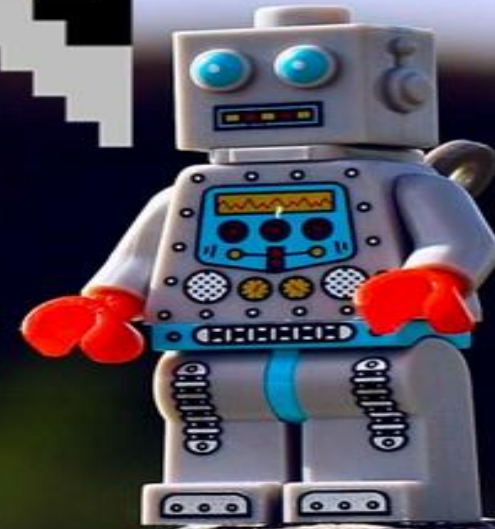
# LEGO ROBOTICS CLUB

WHEN: MONDAY WEEK 1

TIME: 3-4PM

WHERE: TC2 TECHNOLOGY

WHO CAN JOIN: YEAR 7'S





# Team Blue needs you!

Help us support Telford food banks by bringing in food donations!  
Bring in items to LSR to receive a house point as a thankyou for your kindness.



Poppies will be available to buy this week

Look out for you student leaders who will be selling them during tutor time daily

We also invite you to paint a remembrance stone which will displayed in school







Our SEND department needs your help! If you have any Lego, which you no longer use, please can you donate it to us for our LEGO THERAPY INTERVENTION, which we want to use to support our students. Please take to the SEND Department. Your support would be greatly appreciated.



# NOVEMBER ACTIVITIES

HOUSE	POINTS
Hawthorn	6832
Birch	6302
Willow	6309
Sycamore	5482

House	Weekly Points	Position last week
Willow	828	2 <sup>nd</sup>
Birch	757	3 <sup>rd</sup>
Hawthorn	686	1 <sup>st</sup>
Sycamore	652	4 <sup>th</sup>



**TOP HOUSE:  
HAWTHORN!**





# CUMULATIVE TUTOR POINTS SO FAR THIS TERM.

7.1	569	8.1	486	9.1	675	10.1	396	11.1	535
7.2	741	8.2	597	9.2	629	10.2	495	11.2	385
<b>7.3</b>	982	8.3	553	9.3	675	10.3	618	11.3	485
7.4	816	8.4	557	9.4	601	10.4	521	11.4	401
7.5	481	8.5	546	9.5	571	10.5	458	11.5	700
7.6	877	<b>8.6</b>	851	9.6	602	<b>10.6</b>	829	11.6	438
7.7	886	8.7	634	9.7	609	10.7	722	<b>11.7</b>	750
7.8	927	8.8	601	<b>9.8</b>	635	10.8	496	11.8	607