



Student Bulletin



Calendar Events

Monday	Tuesday	Wednesday	Thursday	Friday
Week 2		Year 10 Music and Medical for 60 min sessions (LIT)		TARRC and Stand Against Violence (BIA)

Sports Fixtures

DATE	SPORT	RETURN	LOCATION
WED	U14 Boys Presidents Cup @ Belvidere MJO	16:30	AWAY
THURS	Year 7/8 Winter League Netball	17:15	AWAY
FRI	Year 8 Boys Football VS Thomas Telford	16:30	AWAY

Week Commencing 08/12/25

Monday 8th - NATIONAL BROWNIE DAY: A day dedicated to the rich, chocolatey dessert loved by many!

Monday 8th - BODHI DAY: Also known as **Rohatsu**, this day commemorates the day Buddha experienced enlightenment.

Tuesday 9th - CHRISTMAS CARD DAY: Since the 1840's, sending cards for Christmas has been a tradition spreading holiday cheer and connecting friends and loved ones. Why not send out your own Christmas or Holiday cards!

Wednesday 10th - HUMAN RIGHTS DAY: This day promotes and celebrates the Human Rights Declaration, created in 1948. This document entitles everyone to human rights, regardless of race, gender, religion, sexuality etc. It also calls for global unity to address issues like discrimination, inequality and injustice.

Wednesday 10th - INTERNATIONAL ANIMAL RIGHTS DAY: Dedicated to promoting ethical treatment of all animals and advocating for their rights to live free from harm. It encourages us to stand against animal cruelty and raises awareness of animal welfare.

Friday 12th - INTERNATIONAL DAY OF NEUTRALITY: This day promotes the importance of neutrality in diplomatic relations and conflict resolution

Reminders and Assembly Rota

Please remember
to follow the
one way system
around school

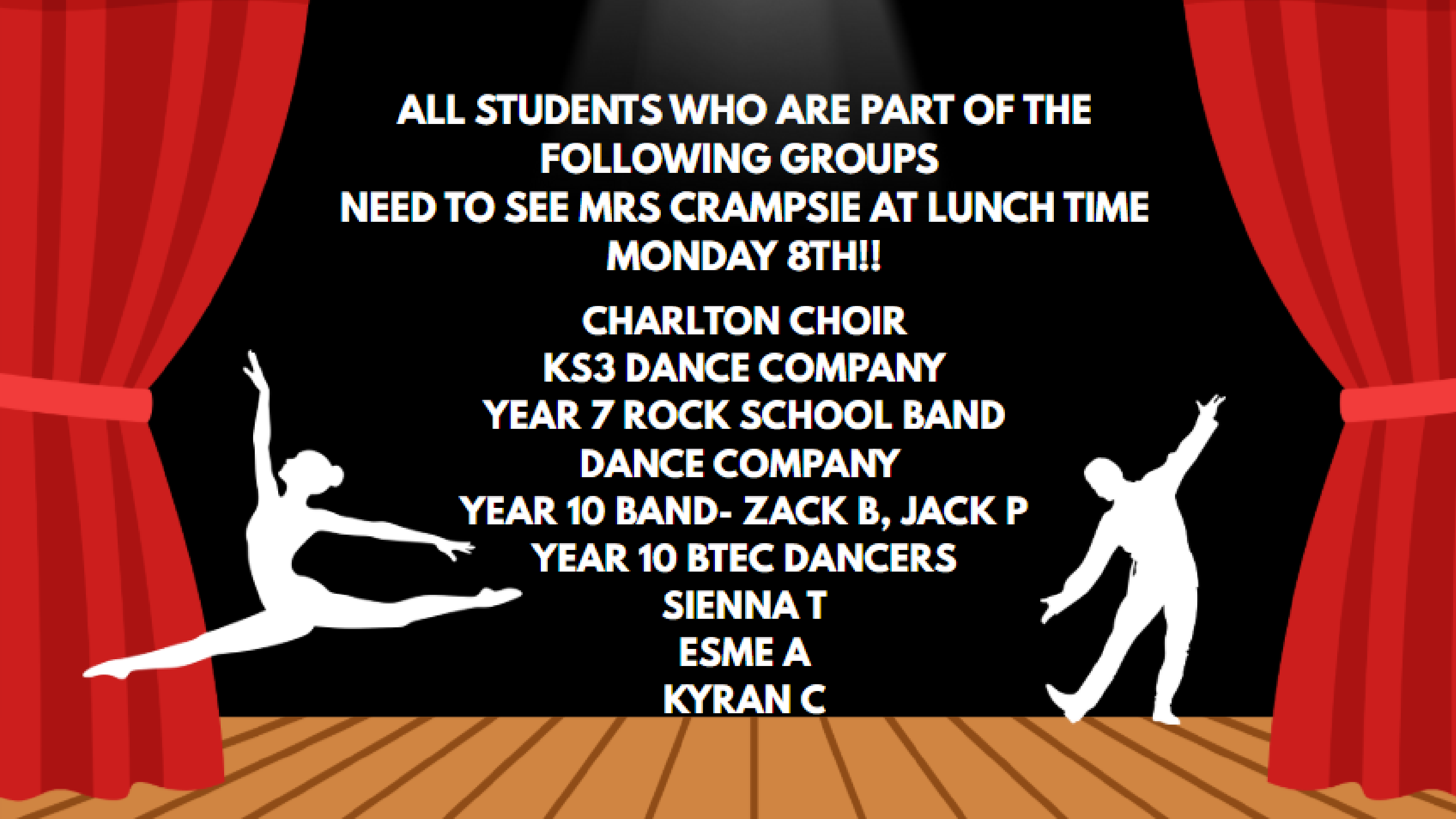


Face to Face or Virtual

Mon	Year 8	BAS	FACE TO FACE
Tues	Year 7	REC	FACE TO FACE
Wed	Year 9 Shrewsbury College		FACE TO FACE
Thur	Year 10 Positive Pathways	VIA	FACE TO FACE
Fri	Year 11 Positive Pathways	VIA	FACE TO FACE



TIMETABLE WEEK 2



**ALL STUDENTS WHO ARE PART OF THE
FOLLOWING GROUPS
NEED TO SEE MRS CRAMPSIE AT LUNCH TIME
MONDAY 8TH!!**

**CHARLTON CHOIR
KS3 DANCE COMPANY
YEAR 7 ROCK SCHOOL BAND
DANCE COMPANY
YEAR 10 BAND- ZACK B, JACK P
YEAR 10 BTEC DANCERS
SIENNA T
ESME A
KYRAN C**

Classroom Entry & Exit Routines

How we enter a classroom:



Get to your class as quickly as possible.



Go straight into your classroom.
Do not line up or wait outside.



Greet your teacher positively:
'Good morning, Sir. How are you, Miss?'



Teacher checks uniform as you enter.
Uniform concerns are logged.



Students enter quietly in a
calm and purposeful manner.



Sit down and get equipment out straight away.



Begin the starter task in silence.

How we leave a classroom:

Pack your equipment away
when the teacher tells you.



Stand behind your chair.



Check your uniform
(blazer is on and shirt is tucked in).



You will not be allowed to leave
until your uniform is perfect.



You will be dismissed table by table in an
organised, calm and timely manner.



Uniform Reminders

Uniform concern logs can be viewed by parents by accessing the My Child at School website/app:

<https://www.mychildatschool.com/MCAS/MCSParentLogin>. The website/app can also be used to track House Points, sanctions (including C1's, C2's, BRR and Homework Concerns), your child's academic progress and key messages regarding attendance and attitude to learning. We strongly advise you gain access to this and review it regularly to enable you to work alongside us from home.

Please see key reminders regarding proper uniform below to help you and your child ensure they are meeting the schools' expectations and are able to wear their uniform with pride:

Boys

- Blazer and year group tie
- Pale blue shirt (Years 7 - 10)
- White shirt (Year 11)
- Plain black trousers (not jeans)
- Black/grey socks
- Navy V-neck pullover with school crest (Optional to be worn under the blazer)
- Plain black shoes (No trainers or canvas shoes)

Girls

- Blazer and year group tie
- Pale blue shirt - Revere collar is not allowed (Years 7 - 10)
- White shirt - Revere collar is not allowed (Year 11)
- Black tailored trousers (not skinny trousers or leggings, straight leg only), or Black knee length pleated skirt.
- Black or white socks or black tights
- Plain black flat walking shoes – Max. heel height 4cms. Max Sole 2cms
- Navy V-neck pullover with school crest (Optional to be worn under the blazer)
- Muslim girls may wear a navy-blue hijab and a navy blue kameez, abaya or maxi skirt with black trousers. Students are expected to wear a tie and blazer with their kameez, abaya or maxi.

Students should not wear hoodies or sweatshirts under their blazers at any time, including breaks or lunchtimes.

Uniform Bank

Take what you need, give what you can.



- Do you need help obtaining uniform?
- Do you wish to swap any items of uniform that are in good condition but no longer fit?

We have uniform and PE Kit available for a voluntary donation

**Please ask at Reception or email
reception@charlton.uk.com**

CHARLTON SCHOOL

*Providing an environment in which all students can succeed,
with learning at the heart of all we do.*

Please can you continue to send in any items of Uniform you no longer require, especially blazers, and if you would like to swap sizes, please pop in and ask for Mrs Kinsey or Miss Littleford, or visit Pastoral.



**** We are in need of shoes, trainers and PE Kit, as well as blazers and ties****

Please drop off any donations in reception.

Your contributions really do make a difference.

We are really grateful for your support,
Thankyou – Mrs Kinsey – Deputy DSL

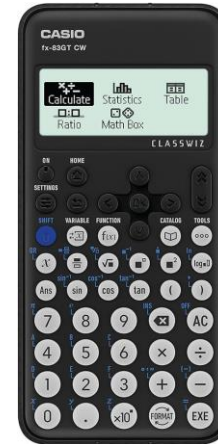
THANK YOU!



Remember your correct Uniform & Equipment

■ Essential Equipment

- 2x Pens
- 1x Pencil
- Red pen for Close The Gap work
- Ruler
- Scientific Calculator
- Protractor



Calculators are available to buy from the finance office in school for £11.

Charlton School Uniform Guide 2025/26

Full Policy can be found at www.charlton.uk.com



Shirts, Ties
& Blazers



Hoodies or Zip up Jackets should not be worn instead of School blazers.

Uniform Guide
2025/26



Skirt Length:
Knee length
pleated skirts only



Trousers:
Boys & Girls

No leggings, skinny or
tight trousers.
Straight leg only

Earrings:



Yes - Black leather style school shoes

Footwear:

No - Sports trainers
(air bubbles or canvas)



Reminder!



Please can parents/carers make sure
they name student clothes and bags.
When they are lost this makes it
possible to find them again!



Our British Values

Democracy



Rule of Law



Mutual Respect



Individual Liberty



Tolerance



Democracy

Democracy can be seen as a state of society characterised by equality of rights and privileges. It can also refer to our nation's electoral systems.

Rule of Law

It is expected that while different people may hold different views about what is 'right' and 'wrong', all people living in England are subject to its law.

Mutual Respect

The proper regard for an individual's dignity, which is reciprocated.

Individual Liberty

Individual liberty suggests the free exercise of rights generally seen as outside Government control.

Tolerance

A fair, objective, and permissive attitude to those whose faith, religion and beliefs may differ from one's own.

RESPECT

RESILIENCE

RESPONSIBILITY





The Charlton Virtue in Focus is:

Responsibility

RESPECT

RESILIENCE

RESPONSIBILITY



CANTEEN LUNCH MENU

WEEK 3	MONDAY	TUESDAY	WEDNESDAY	THURSDAY	FRIDAY
OPTION 1	CHEESY CHILLI CHICKEN PASTA	CHICKEN SOUVLAKI WITH GOLDEN RICE OR SEASONED POTATOES	ROAST OF THE DAY WITH NEW POTATOES & GRAVY	CHICKEN ENCHILADAS SERVED WITH RICE	CHIP SHOP FRIDAY WITH CHIPS, MUSHY PEAS AND GRAVY/CURRY SAUCE
OPTION 2	SPAGHETTI & PLANT BASED MEATBALLS	SPINACH & CHEESE WHIRL WITH GOLDEN RICE OR SEASONED POTATOES	ROASTED VEG WELLINGTON WITH NEW POTATOES & GRAVY	MEXICAN SOYA CHILLI WITH 50/50 RICE AND SOUR CREAM	VEGAN SAUSAGE WITH CHIPS, MUSHY PEAS AND GRAVY/CURRY SAUCE
ON THE SIDE	VEGETABLES OF THE DAY	VEGETABLES OF THE DAY	VEGETABLES OF THE DAY	VEGETABLES OF THE DAY	VEGETABLES OF THE DAY
DESSERT OF THE DAY	SELECTION OF HOMEBAKES	SELECTION OF HOMEBAKES	HOT PUDDING & CUSTARD	SELECTION OF HOMEBAKES	SELECTION OF HOMEBAKES

ALSO AVAILABLE:
SOUP OF THE DAY
FILLED JACKET POTATOES

CHECK OUT...
OUR HOT AND COLD
GRAB & GO SECTION

ALLERGIES
PLEASE SPEAK TO A MEMBER OF STAFF IF YOU HAVE ANY
ALLERGY AND NEED TO KNOW WHAT'S INSIDE OUR FOOD
DISHERS, THEY WILL ADVISE YOU OF THE AVAILABLE CHOICES.

Look out for a purple lanyard



These are Charlton's main DSL's:

If you see a member of staff wearing a purple lanyard, this means they are a designated safeguarding lead.

They have had specific training for dealing with any safeguarding matters that you may have.

If you have any worries or concerns do not hesitate to go to them to report any safeguarding concerns or for help and advice.



Sparx Reader

YEAR 7



1) Jacob K (Jacob the Strategist) 2,640



2) Maddison C (Maddison the Legend) 1,393



3) Barbara G (Barbara the Dancer) 1,167



Sparx Reader

YEAR 8



1) Jana Z (Jana the CEO) 1,442

2) Catherine A (Catherine the Marvel) 1,251

3) Aubrie J-C (Aubrie the Majesty) 1,203



Sparx Reader

YEAR 9



1) Zach G (Zach the Theorist) 2,343



2) Nobrianna B (Nobrianna the Rebel) 1,002



3) Amna H (Amna the Adventurer) 945



Sparx Reader

YEAR 10



1) Aiza K (Aiza the Sentinel) 649



2) Keziah K (Keziah the Nimbus) 631



3) William P (William the Ranger) 605



Sparx Reader

YEAR 11



1) Sandiv W (Sandiv the Ace) 2,607



2) Rahmaan C (Rahmaan the One and Only) 696



3) Kieran H (Kieran the Rebel) 502



Sparx Reader

TERM CHAMPIONS!

WELL
DONE

- | | | |
|-----|--------------------------------------|--------|
| 1) | Catherine A (Catherine the Marvel) | 24,562 |
| 2) | Qais S (Qais the Boss) | 20,725 |
| 3) | Abdullah C (Abdullah the Sentinel) | 20,697 |
| 4) | Jacob K (Jacob the Strategist) | 20,439 |
| 5) | Sophie B (Sophie the Star) | 18,869 |
| 6) | Nobrianna B (Nobrianna the Rebel) | 15,729 |
| 7) | Alicia E (Alicia the Mastermind) | 11,594 |
| 8) | Benjamin S (Benjamin the Peacemaker) | 11,361 |
| 9) | Paven T (Pavan the Monarch) | 10,815 |
| 10) | Amna H (Amna the Adventurer) | 9,793 |

GOOD
WORK!

Inclusion Team Shoutouts!

Year 7

Alyssa B

Year 8

Oliver H
Bella F
Claudia H
Archie W
Alex C

Year 9

Year 10

Year 11

Harry S





HUMAN RIGHTS DAY!



10TH DECEMBER 2025

WHAT IS HUMAN RIGHTS DAY??

HUMAN RIGHTS ARE RIGHTS WE HAVE SIMPLY BECAUSE WE EXIST AS HUMAN BEINGS!

THEY ARE BASIC RIGHTS THAT EVERY PERSON NEEDS TO LIVE WITH DIGNITY AND DEVELOP THEIR POTENTIAL.

IT GIVES US RIGHTS TO THINGS SUCH AS FOOD, HOUSING, EDUCATION, HEALTHCARE, THE RIGHT TO EXPRESSION, TO HOLD RELIGIOUS BELIEFS, AND TO BE PROTECTED AGAINST VIOLENCE, ABUSE AND DISCRIMINATION.

THE HUMAN RIGHTS DECLARATION, CREATED IN 1948, ALLOWS EVERYONE TO RIGHTS, REGARDLESS OF RACE, GENDER, RELIGION, SEXUALITY ETC!





CHRISTMAS POETRY COMPETITION

SUBMIT YOUR OWN FESTIVE POEM
FOR THE CHANCE TO WIN
1 OF 5 CHRISTMAS TREAT BUNDLES!
ALL ENTRIES MUST BE BETWEEN
30 - 100 WORDS LONG

AND MUST INCLUDE ONE OF THE FOLLOWING WORDS:

“SNOWFLAKE”

“PRESENT”

“YULE”

CLOSING
DATE:
16TH
DECEMBER!

PLEASE SUBMIT YOUR ENTRY TO MISS WHITFORD IN THE LIBRARY!

CHRISTMAS ORNAMENTS FOR SALE

**£1.50 EACH
OR
3 FOR £4**



**AVAILABLE
IN THE
BRIDGE
(NU4)**

**MADE BY
THE BRIDGE ENTERPRISE GROUP**



POPPY APPEAL



**THANK YOU TO EVERYONE WHO
DONATED AND BROUGHT POPPIES.**

WE RAISED



£90.05



**FOR THE POPPY APPEAL
AND THE ROYAL BRITISH LEGION.**



2026 SPANISH TRIP! Valencia



gracias

**A PLACE HAS BECOME AVAILABLE FOR THE
YEAR 11/10 SPANISH TRIP TO VALENCIA!
PLEASE SEE MRS FOY IN
MFL3 ASAP
IF YOU WOULD LIKE A LETTER!**



STRANGER -SAGAS- R

WHERE MYSTERY MEETS CREATIVITY

**THANK YOU TO EVERYONE WHO
SUBMITTED THEIR STORY
ENTRIES!**

**ALL ENTRIES WILL BEEN SENT
TO YOUNGWRITERS ON THE
10TH DECEMBER!**

GOOD LUCK!!!



YEAR 11

LANGUAGES!

ANY YEAR 11 WHO THINK THEY MAY BE ELIGIBLE
TO TAKE A GCSE IN THE LANGUAGE THEY SPEAK AT
HOME

(EG. POLISH OR ITALIAN)

PLEASE SEE MRS HAYWARD IN MFL5
AS SOON AS POSSIBLE.

YOU MUST BE ABLE TO DO LISTENING, SPEAKING,
READING AND WRITING IN THE LANGUAGE!!!





Year 10 Work Experience

18th to 22nd May 2026



DEADLINES:

In County:
27th March 2026

Out of County:
13th February 2026

Please complete
your
Employer
forms!



WINTERFEST!!!

CHRISTMAS CARD DESIGN COMPETITION!

DESIGN YOUR OWN CHRISTMAS
CARDS TO BE SOLD!



ALL MONEY RAISED WILL GO TO
CHARITY!



SUBMIT YOUR DESIGN TO MISS THOMAS
IN PASTORAL!



WINTERFEST!!!

GIFT DONATIONS!

ALL DONATIONS
GO TO
TELFORD
CRISIS CENTRE



WE'RE LOOKING TO DONATE GIFTS
TO THOSE LESS FORTUNATE
THIS CHRISTMAS PERIOD!
IF YOU WOULD LIKE TO
TAKE PART,
PLEASE WRAP UP YOUR GIFT AND LABEL THEM
(EG BOY,12 OR GIRL,7)

ALL GIFTS TO BE GIVEN TO
STUDENT SERVICES!





Paris Trip 2026

OPEN TO YEAR 9 AND 10
PLEASE SEE MRS FOY FOR A LETTER IF YOU ARE
INTERESTED IN GOING!



Make Fabric Christmas Ornaments with Miss Gibb

Every Wednesday in AR2 from 12th November – 10th December
Sign up sheet will be outside AR2 on Monday 3rd November



Barcelona TRIP JUNE 27



If you are studying or want to take GCSE Art and/or GCSE Textiles (Current Year 9s & 10s Only) and haven't already done so please get a trip letter from AR2, Miss Gibb for our Barcelona Trip in June 2027.

We only have a couple of places left!



WINTERFEST!!!

SELECTION BOX DONATIONS!

WE'RE LOOKING TO DONATE
SELECTION BOXES
TO THOSE LESS FORTUNATE!

IF YOU'D LIKE TO DONATE,
PLEASE GIVE YOUR BOX IN TO
STUDENT SERVICES!

ALL DONATIONS
GO TO
TELFORD
CRISIS CENTRE!





SCHOOL NURSE DROP IN MONDAY AND WEDNESDAY WHAT WE CAN OFFER YOU:

A SCHOOL NURSE WILL ATTEND YOUR SCHOOL WEEKLY FOR HEALTH DROP-IN SESSIONS, THESE ARE A CONFIDENTIAL PROVIDING ADVICE, SUPPORT, AND SIGNPOSTING FOR PHYSICAL AND EMOTIONAL HEALTH.

A SCHOOL NURSE CAN PROVIDE YOU WITH A C-CARD FOR FREE CONDOMS, SEXUAL HEALTH ADVICE AND SUPPORT

OUR EMOTIONAL HEALTH AND WELLBEING LEAD NURSE ALSO RUNS A CLINIC FOR PARENTS EVERY MONDAY, 9-2PM AT SUTTON HILL MEDICAL PRACTICE (ONLINE APPOINTMENTS ALSO AVAILABLE UPON REQUEST ON 0333 358 3328).

YOUNG PEOPLE CAN CALL THE HEALTH FOR TEENS LINE TO CONFIDENTIALLY SEEK SUPPORT ON 07520619051

ASK YOUR SCHOOL TO REFER IN OR SELF-REFER BY CALLING US ON
0333 358 3328



theccard

HEALTH FOR TEENS

**YOUNG
MiNDS
kooth**

CHARLTON ATTENDANCE

Charlton School Attendance	Telford and Wrekin Attendance	West Midlands Attendance	National Attendance
93.7%	92.74%	92.14%	91.90%

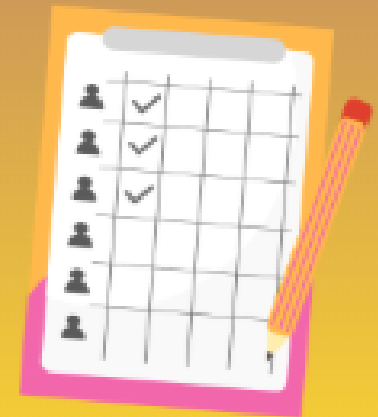
**KEEP GOING WITH YOUR FANTASTIC ATTENDANCE!
ONE MORE WEEK TO GO FOR ENTRIES INTO THE PRIZE DRAWS!**



**STUDENTS WITH 100% ATTENDANCE:
309**

**STUDENTS WITH 95% ATTENDANCE:
510**

**STUDENTS WITH 93-95% ATTENDANCE:
89**





HURRAH!



TOP ATTENDANCE

TOTAL



SINCE THE START OF TERM

97.50%

TUTOR GROUP


7.1





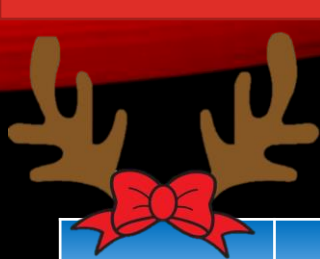
House Activities

HOUSE	POINTS
Birch	70826
Willow	69271
Hawthorn	68595
Sycamore	55083



House	Weekly Points
Willow	4062
Sycamore	3358
Birch	4492
Hawthorn	3533

Top house this week:
Birch



Cumulative Tutor Points so far this term:



7-01	3787
7-02	2987
7-03	6024
7-04	5528
7-05	2951
7-06	4984
7-07	3665
7-08	3790
7-09	4005

8-01	3242
8-02	3400
8-03	4576
8-04	3879
8-05	5398
8-06	5758
8-07	5744
8-08	6012
8-09	4593

9-01	3491
9-02	2507
9-03	2875
9-04	5343
9-05	4552
9-06	3513
9-07	2767
9-08	3794
9-09	2882

10-01	2374
10-02	3202
10-03	1889
10-04	3707
10-05	3582
10-06	4401
10-07	7017
10-08	2025
10-09	2519

11-01	2871
11-02	2665
11-03	3362
11-04	2117
11-05	2593
11-06	2159
11-07	3131
11-08	2859
11-09	2707



Top Tutor Group for each House



8.2



TOP
FORM IN
SCHOOL!!

7.3



8.6



8.8

DONATIONS NEEDED!

ART/TEXTILES ARE LOOKING FOR THE FOLLOWING ITEMS:

RECORDS

CDS

CASSETTE TAPES

ROAD MAPS

OS MAPS

PLEASE BRING ANY DONATIONS TO THE ART/TEXTILES ROOMS!





**MESSAGE
FROM ART!
WE NEED ANY OLD
MAGAZINES FOR AN
UPCOMING ART
PROJECT! PLEASE DROP
THEM INTO RECEPTION IF
YOU HAVE ANY.**

**GOT BOOKS AT HOME YOU DON'T READ
ANYMORE?**

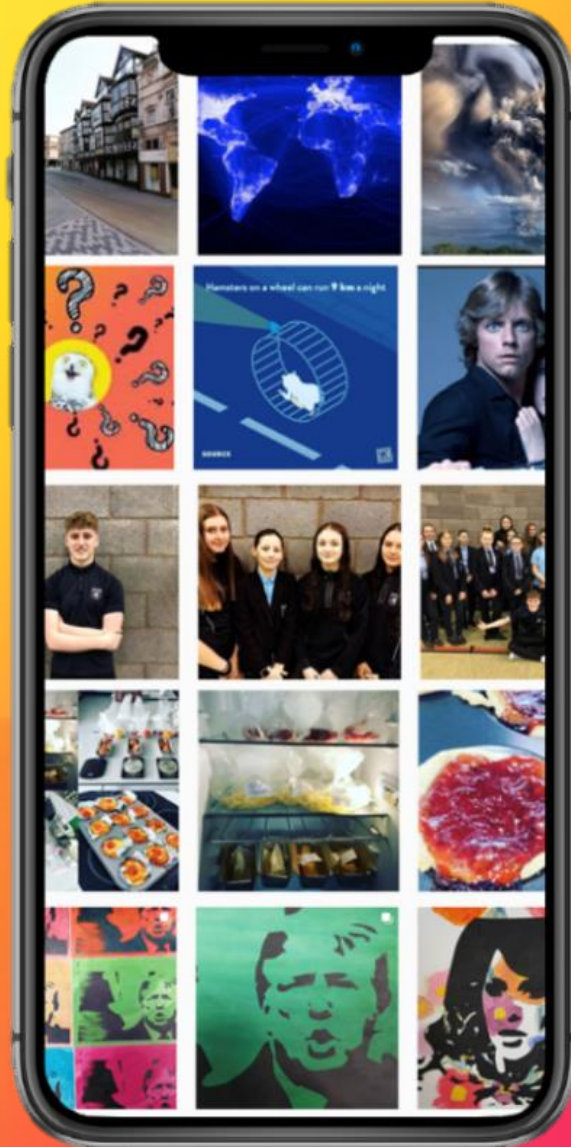
CONSIDER DONATING THEM TO THE LIBRARY!



PLEASE BRING ANY UNWANTED BOOKS TO MISS WHITFORD IN THE LIBRARY!

FOLLOW OUR INSTAGRAM ACCOUNTS TO SEE THE WONDERFUL WORK
CREATED BY THE TALENTED STUDENTS HERE AT CHARLTON!

Follow



@CHARLTONSCHOOLGEO

@CHARLTONSCHOOLEXPRESSIVEARTS

@CHARLTONSCHOOLMEDIA

@CHARLTONSCHOOLPE

@CHARLTONSCHOOLART

@CHARLTONSCHOOLREVISION



CHARLTON SCHOOL TECHNOLOGY DEPARTMENT INVITES YOU TO:

CATERING CLUB FOR YEAR 9

TC7 EVERY WEDNESDAY
FROM 3.10-4.10

THIS CLUB IS TO A COOKING CLUB WHERE YOU WILL
MAKE A RANGE OF SWEET AND SAVOURY ITEMS.

SIGN UP SHEET WILL GO UP OUTSIDE TC7 ON
THURSDAYS THE WEEK BEFORE- MUST SIGN UP AS
PLACES ARE LIMITED.



WOMEN'S Empowerment Group

**THE WOMEN'S EMPOWERMENT
GROUP MET LAST MONDAY IN MU1.
VALUABLE INCITE WAS SHARED BY
EVERYONE INVOLVED, AND HAS
GIVEN THE GROUP A FOUNDATION
TO BUILD FROM MOVING FORWARD!**



**THE NEXT MEETING WILL BE MONDAY 8TH DECEMBER IN MU1.
WE LOOK FORWARD TO SEEING YOU THERE!!!**

Netball Club!

**WEDNESDAY 10TH DECEMBER
WILL BE THE LAST NETBALL CLUB
THIS TERM!
IT WILL BE A CHRISTMAS SPECIAL!**



Pickleball Club

On Thursdays Week 1 with
Miss Dubocquet
3:10-4:10



The background of the poster is a light cream color, decorated with various colorful illustrations of craft supplies. In the top left, there are two paintbrushes with yellow handles and brown bristles. Below them is a small purple heart and a blue rectangular object. To the right of the brushes is a spool of green thread. In the top right, there is a purple jar and a white box with colorful patterns. On the right side, there are three markers in blue, red, and green. At the bottom left, there is a large brown artist's palette with several colored paint spots (blue, yellow, green, purple, red). At the bottom right, there is a small green Christmas tree with yellow lights and red ornaments, sitting on a red base. The main title 'CREATIVE CRAFT CLUB' is written in large, bubbly, light green letters with a thick pink outline, arched across the top of the poster.

CREATIVE CRAFT CLUB

FRIDAYS IN TC4!

**SIGN UP SHEETS OUTSIDE TC4,
PLEASE ADD YOUR NAMES
EVERY WEEK!**

THE CRAFT THEME IS:

 **CHRISTMAS CRAFT!**

**LIMITED TO
15 SPACES!!!**



Dance Company Rehearsals

**Every Wednesday after
school in the Main Hall**

3:10-4:10PM

CHOIR!

Wednesdays
3:10-4:10pm





KS3 Dance Club

**Tuesdays
3:10-4:10pm**





ART CLUB

EVERY TUESDAY
AFTERSCHOOL IN AR1
3:10PM - 4:10PM
YEARS 7-9



HOMEWORK CLUB!

**Tuesday and Wednesday
after school in NU4!**



SOCIAL CLUB!

Every Thursday
in NU4

INVITE
ONLY!



Promoting
Non-Fiction
Reading



COMING SOON

Christmas
Lunch!!!



Christmas
Concert!



WinterFest
Continues!

After School/Lunch Extra Curricular Activities

Club / Activity / Term	Day and Times	Location	Available to the following year groups					Additional Information e.g. equipment needed etc.
			7	8	9	10	11	
Stem Club	Monday 3:10pm to 4:10pm	SC7	✓	✓				This club is invite only.
Bridge Homework Club	Tuesday 3:10pm to 4:10pm	NU4	✓	✓	✓	✓	✓	
Library Access	Monday to Thursday 3:10pm to 4:00pm Friday 3:10-3:30pm	Library	✓	✓	✓	✓	✓	
Diversity LGBTQ+ CLUB	Monday 3:10pm to 4:10pm Week 2 Only	MA5	✓	✓	✓	✓	✓	
D of E - Mrs Bird	Monday 3:10pm to 4:10pm	Main Hall			✓			Usually from Feb to July. Please see Mrs Bird
Bridge Social Club	Wednesday & Thursday 3:10 pm to 4:10 pm	NU4	✓	✓	✓	✓	✓	By invitation only
MFL Club	Thursday 3:10pm to 4:10pm Week 2 Only	MFL5	✓	✓	✓	✓	✓	
Creative Craft – Mrs Turner	To be confirmed	TC4	✓	✓	✓	✓	✓	This club will be starting in October.
Strategy Games Club & Chess Club – Mr Millar	Tuesday 3:10pm to 4:10pm	PE1	✓	✓	✓	✓	✓	You can bring your own cards if you wish.
Dungeon and Dragons Club	Monday 3:10 - 4:10pm	PE1	✓	✓	✓	✓	✓	
KS3 Art Club	Tuesday 3:10 - 4:10pm	AR1	✓	✓	✓			
KS4 Art Club	Thursday 3:10 - 4:10pm	AR1				✓	✓	
Year 11 Study Zone	Everyday 3:10 - 4:10pm	TBC					✓	
Maths Homework Club	Wednesday 3:10 - 4:10pm	MA7	✓	✓	✓	✓	✓	
UNICEF Project	Tuesday 3:10 - 4:10pm Week 2 ONLY	HU5			✓	✓	✓	Invite only

⇒ ⇒ 3:10pm-4:10pm

Expressive Arts Extra Curricular Activities

	ART	DRAMA	DANCE	MUSIC
MONDAY	<u>School Show Principal Rehearsals</u> Monday rehearsals will need to be attended by anyone who has a principal role in the school production. If you are unsure whether this applies to you, please check with one of the Expressive Arts teachers. Time: 3:10-4:10 Location: Main Hall/DRI Teacher: Expressive Arts Department		<u>Street Dance - TBC</u> Entry by audition, open to all if you have an interest to Dance come along and audition. Led by professional Street Dance choreographer and Dancer Abbie. Time: 3:10-4:10 Location: DRI/MUI Teacher: Abbie	
TUESDAY	<u>Charlton Art Club</u> Open to any KS3 students with an interest in Art. Led by our talented Arts Ambassadors. Time: 3:10-4:10 Location: ARI Teacher: Arts Ambassadors		<u>KS3 Dance Club</u> Open to any KS3 students with an interest in dance. Led by our talented Arts Ambassadors. Time: 3:10-4:10 Location: Main Hall Teacher: Arts Ambassadors	<u>Rock School</u> Bring your guitar, drumsticks or voice and be part of a rock band. Welcome to all levels and abilities but limited places are available – please speak to Mrs. Crampsie if interested. Time: 3:10-4:10 Location: MUI/Practice Rooms Teacher: D Wooley/ S Delves
WEDNESDAY			<u>Dance Company</u> For students with an interest in dance. It will be by invitation only and auditions. Time: 3:10-4:10 Location: Main Hall Teacher: Mrs Wellings	<u>Charlton Choir</u> Open to all year groups and abilities – singing is proven to help with stress, confidence, improve memory and allows you to express yourself and build a sense of community. I hope to see you there! Time: Location: 3:10-4:10 MUI Teacher: Mr Allen
THURSDAY		<u>School Show – Full Cast Rehearsals</u> Rehearsals will need to be attended by everyone who is in the show, including the backstage and technical teams – set and costume designers must attend the meeting in ARI. Speak to Mrs Crampsie if you would like to take part in the show and have not already signed up. Please check the cast list outside MUI/DRI if you are unsure of your role. Time 3:10-4:10 Location: Main Hall Teacher: Expressive Arts Department		
FRIDAY				

⇒ ⇒ **3:10pm-4:10pm**

PE Extra Curricular Activities

	MAIN HALL / FITNESS SUITE	SPORTS HALL	FIELD	TENNIS COURTS
MONDAY	<u>After School</u> Cambridge National / GCSE- catch up – PEI	<u>After School</u> Badminton All Years Ms Byrne	<u>After School</u>	<u>After school</u>
TUESDAY	Staff Meetings <u>After School</u>	Staff Meetings <u>After School</u> Basketball KS4 Mr Thomas	Staff Meetings <u>After School</u>	Staff Meetings <u>After School</u>
WEDNESDAY	<u>After school</u> Staff Fitness Body Pump	<u>After School</u> Netball All years Mrs Johnson	<u>After School</u> Boys Football Year 9,10 & 11 Boys Mr Jones / Mr Lawton / Mr Thomas Year 7 and 8 Boys Mr Jones Girls Football All Years Ms Byrne	<u>After School</u>
THURSDAY	<u>After School</u> Staff Fitness Body Pump	<u>After School</u> Girls Indoor cricket Miss Fozzard All Years	<u>After School</u> Rugby Boys all years Mr Lawton	<u>After School</u>
FRIDAY	<u>After School</u> Fitness / Weight Training All Years Boys & Girls Mr Thomas	<u>After School</u> Basketball KS3 Mr Thomas	<u>After School</u> Girls rugby All years Miss Fozzard and Miss Morris	<u>After School</u> Cambridge National / GCSE- catch up – PEI

⇒ ⇒ 3:10pm-4:10pm